

Service Terms

nbn[™] BSS ILA Sandpit Module

nbn[™] BSS Interim Launch Agreement



Service Terms

nbn™ BSS ILA Sandpit Module

nbn™ BSS Interim Launch Agreement

| Version | Description | Effective Date |
|---------|---|------------------|
| 1.0 | First issued version of nbn™ BSS Interim Launch Agreement | Execution Date |
| 1.1 | Amendments to introduce nbn™ Mobility VISIP and nbn™ Mobility Private Network Layer 3 | 15 December 2021 |

Copyright

This document is subject to copyright and must not be used except as permitted below or under the Copyright Act 1968 (Cth). You must not reproduce or publish this document in whole or in part for commercial gain without the prior written consent of nbn. You may reproduce and publish this document in whole or in part for educational or non-commercial purposes as approved by nbn in writing.

Copyright © 2021 nbn co limited. All rights reserved. Not for general distribution.

Disclaimer

This document is provided for information purposes only. The recipient must not use this document other than with the consent of nbn and must make its own inquiries as to the currency, accuracy and completeness of this document and the information contained in it. The contents of this document should not be relied upon as representing nbn's final position on the subject matter of this document, except where stated otherwise. Any requirements of nbn or views expressed by nbn in this document may change as a consequence of nbn finalising formal technical specifications, or legislative and regulatory developments.

Environment

nbn asks that you consider the environment before printing this document.

Introduction

These **nbn**TM BSS ILA Sandpit Service Terms include:

- provisions that describe the **nbn**TM BSS ILA Sandpit and constitute a [Service Description](#);
- provisions which are specific to **nbn**'s supply of the **nbn**TM BSS ILA Sandpit;
- explanatory notes as a guide to provisions within this document; and
- provisions which set out the Charges in relation to the supply of the **nbn**TM BSS ILA Sandpit, and constitute a [Price List](#).

This document forms part of the **nbn**TM BSS Interim Launch Agreement.

Roadmap

A roadmap describing the structure of this document is provided below.

Part A: Service Description

Part A describes what the **nbn**TM BSS ILA Sandpit is and sets out general terms in relation to the availability of the **nbn**TM BSS ILA Sandpit.

| Part A: Service Description | | Page |
|-----------------------------|--|------|
| 1 | nbn TM BSS ILA Sandpit description | 4 |
| 2 | nbn TM BSS Sandpit architecture | 5 |
| 3 | Use of the nbn TM BSS ILA Sandpit | 6 |
| 4 | General conditions of supply | 8 |

Part B: Service Terms

Part B includes provisions which are specific to **nbn**'s supply of **nbn**TM BSS ILA Sandpit.

| Part B: Service Terms | | Page |
|-----------------------|------------------------|------|
| 5 | Operational Management | 10 |

Part C: Price List

Part C sets out the Charges which apply in relation to the supply of the **nbn**TM BSS ILA Sandpit.

| Part C: Price List | | Page |
|--------------------|-----------------------|------|
| 6 | Non-recurring Charges | 12 |

Part A: Service Description

The **nbn**TM BSS ILA Sandpit permits Customer to conduct specified testing and development activities relevant to:

- the **nbn**TM Platform Interfacing Service; and
- the **nbn**TM BSS Products,

as set out below:

| Sandpit | Capabilities/Deliverables | Related activity | Activities described in section |
|--|-----------------------------|---|---------------------------------|
| nbn TM BSS ILA Sandpit | ABP; B-NNI; BVC; IAC; UNI-D | nbn TM BSS Product Testing and Development Activities | 1.2 |

*Section 1 sets out the testing and development activities which Customer may perform using the **nbn**TM BSS ILA Sandpit.*

1. **nbn**TM BSS ILA Sandpit description

1.1 Function of the **nbn**TM BSS ILA Sandpit

- The **nbn**TM BSS ILA Sandpit is made available by **nbn** only for the specific testing and development purposes set out in section 1.2.
- Customer must not use the **nbn**TM BSS ILA Sandpit to supply any products or services to Downstream Service Providers or End Users without the prior written consent of **nbn**.

1.2 **nbn**TM BSS testing activities

Customer may use the **nbn**TM BSS ILA Sandpit to:

- prepare for and perform:
 - Customer Equipment testing;
 - development activities; and
 - any related or ancillary activities,
 in respect of any **nbn**TM BSS Product (**nbn**TM **BSS Product Testing and Development Activities**); and
- conduct any other activities which **nbn** undertakes pursuant to an SAU and which are applicable in respect of the **nbn**TM BSS ILA Sandpit.

Section 2 sets out the **nbn**™ BSS ILA Sandpit elements that support **nbn**™ BSS Product Testing and Development Activities which Customer may perform using the **nbn**™ BSS ILA Sandpit.

2. **nbn**™ BSS Sandpit architecture

- (a) The **nbn**™ BSS ILA Sandpit comprises elements that enable Customer to perform **nbn**™ BSS Product Testing and Development Activities. Figure 1 below illustrates the **nbn**™ BSS ILA Sandpit.

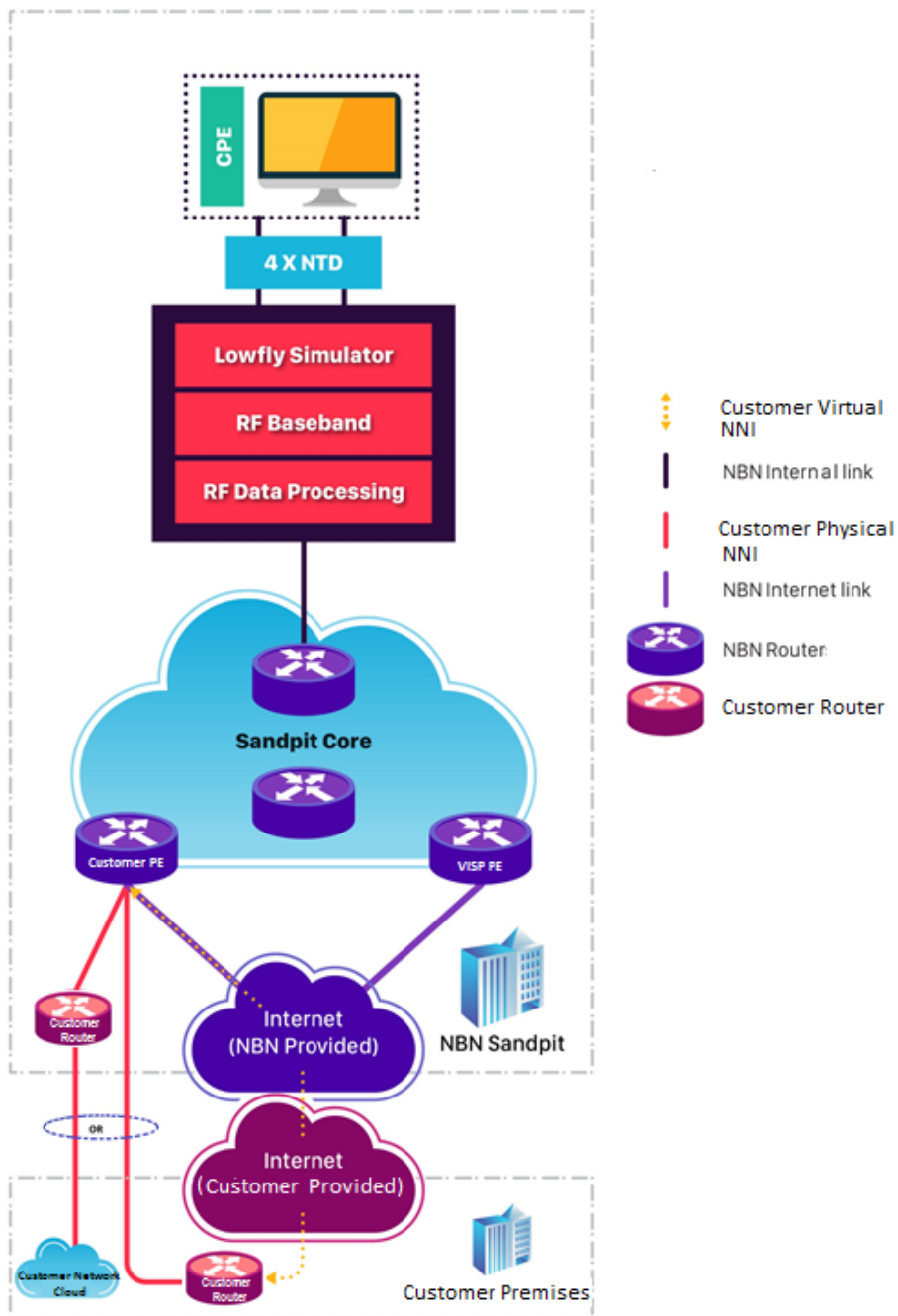


Figure 1: BSS Sandpit Components

- (b) The **nbn**TM BSS ILA Sandpit is available in the following manner:

| Variant | Features / conditions |
|--------------------|---|
| nbn -hosted | nbn hosts the VSAT NTDs, and provides access to the UNI-Ds, at the nbn TM Melbourne Test Facility. |

*Section 3 sets out the location at which the **nbn**TM BSS ILA Sandpit is available, the requirements for performance testing and development activities and the support **nbn** will provide to Customer.*

3. Use of the **nbn**TM BSS ILA Sandpit

3.1 Locations of the **nbn**TM BSS ILA Sandpit

The **nbn**-hosted variant of the **nbn**TM BSS ILA Sandpit is available at the **nbn**TM Melbourne Test Facility.

3.2 Performance of **nbn**TM BSS testing

For **nbn**TM BSS Product Testing and Development Activities:

- (a) subject to section 5.3, **nbn** will provide the following items to Customer:

| Item | Description | Quantity |
|-----------------|-------------------------------------|----------|
| VSAT NTD | VSAT NTD IDU Gemini | 2 each |
| VSAT NTD | VSAT NTD IDU Capricorn | 2 each |
| Contact details | Contact details for Sandpit support | 1 |

- (b) Customer must not reconfigure, or attempt to reconfigure, the VSAT NTDs;
- (c) Customer is responsible for installing and operating all Customer Equipment connected to the UNI-D in respect of **nbn**TM BSS Product Testing and Development Activities;
- (d) **nbn** will make available to Customer:

| Capability | Description |
|------------|---|
| BVC | Mirrors type and structure of BVCs available as a Product Component of relevant nbn TM BSS Products |
| UNI-D | Mirrors type and structure of UNI-Ds available as a Product Component of nbn TM BSS Products |
| IAC | Mirrors type and structure of IACs available as a Product Component of relevant nbn TM BSS Products |

| | |
|-------|--|
| B-NNI | <p>Mirrors the type and structure of B-NNIs available as a Product Component of relevant nbnTM BSS Products and available in the following connection types for the purposes of the nbnTM BSS ILA Sandpit only:</p> <ul style="list-style-type: none"> • Physical connection: Direct connection to B-NNI via a physical network interface; and • Virtual connection: Connect to the B-NNI via an internet VPN (IPSEC). |
|-------|--|

- (e) **nbn** will make available to Customer a low fly satellite simulator environment in respect of a single beam only; and
- (f) Customer acknowledges that:
- (i) **nbn** will not make available a virtual connection to the B-NNI other than in respect of **nbn**TM ABSL3 or **nbn**TM Mobility Private Network Layer 3;
 - (ii) Customer may not, in respect of a B-NNI, simultaneously use a virtual connection and a physical connection; and
 - (iii) if Customer makes use of a virtual connection to the B-NNI, the available **nbn**TM BSS Product Testing and Development Activities may be limited, as notified by **nbn** from time to time.

3.3 Establishing connectivity and use of the **nbn**TM BSS ILA Sandpit

If Customer acquires the **nbn**-hosted variant of the **nbn**TM BSS ILA Sandpit at the **nbn**TM Melbourne Test Facility, each party must conduct the following activities (as applicable):

| nbn TM BSS Product | Activity | Party responsible |
|---|--|-------------------|
| nbn TM ABSL3 nbn TM Mobility Private Network Layer 3 | Provide or acquire upstream backhaul to establish connectivity between the Customer Network and the nbn TM BSS ILA Sandpit | Customer |
| | Arrange building entry rights and physical access in accordance with section 4.2(d) | Customer |
| | Terminate upstream backhaul at the point specified by nbn | Customer |
| | Connect the physical B-NNI to nbn TM BSS ILA Sandpit patch-panel | Customer |
| | Patch connector B-NNI to the nbn TM BSS ILA Sandpit network | nbn |
| | Access and use the physical B-NNI and UNI-D to access the BVC locally at the nbn TM Melbourne Test Facility, and in accordance with nbn 's directions | Customer |
| | Establish Customer side public IP address for IPSEC connectivity in relation to virtual access to the B-NNI | Customer |

| | | |
|---|---|------------|
| | Establish nbn side public IP address for IPSEC connectivity in relation to virtual access to the B-NNI | nbn |
| | Provide IPSEC encryption details in relation to virtual access to the B-NNI | nbn |
| | Provide IP address for BGP peering in relation to virtual access to the B-NNI | nbn |
| | Establish Layer 3 IP connectivity between the UNI-D and Customer Equipment connected to the B-NNI | Customer |
| | Establish Layer 3 IP connectivity between two different UNI-Ds VSAT NTDs (without any traffic traversing the B-NNI) | Customer |
| nbn TM VISP nbn TM IoT nbn TM Mobility VISP | Establish internet connectivity at the UNI-D in accordance with nbn 's directions | Customer |

*Section 4 includes general terms in relation to the availability of the **nbn**TM BSS ILA Sandpit and sets out exclusions to the supply of the Sandpit.*

4. General conditions of supply

4.1 Availability

- (a) The **nbn**TM BSS ILA Sandpit is a shared resource and access to the **nbn**TM BSS ILA Sandpit is subject to availability.
- (b) Customer acknowledges that use of the **nbn**TM BSS ILA Sandpit may not be continuous or free of faults and that **nbn** may interrupt use of the **nbn**TM BSS ILA Sandpit at any time.

4.2 Exclusions

- (a) The **nbn**TM BSS ILA Sandpit is one element required for Customer to perform the **nbn**TM BSS Product Testing and Development Activities described in these **nbn**TM BSS ILA Sandpit Service Terms.
- (b) Customer is responsible for providing or acquiring other elements necessary to perform the **nbn**TM BSS Product Testing and Development Activities described in these **nbn**TM BSS ILA Sandpit Service Terms.
- (c) The **nbn**TM BSS ILA Sandpit does not include the supply by **nbn** of:
 - (i) any upstream backhaul or downstream backhaul, interconnecting network infrastructure, such as dark fibre or Ethernet links, or other connections for the purposes of upstream backhaul or downstream backhaul from the **nbn**TM BSS ILA Sandpit to the Customer Network;
 - (ii) any content or applications, including IP transit, any Customer Equipment, BGP routing, soft switching infrastructure and all international connectivity;

- (iii) any other end user equipment, such as personal computers and network attached storage solutions;
 - (iv) direct access to, or direct use of, **nbn**'s core systems or the functionality of **nbn**'s core systems; or
 - (v) building entry rights or physical access to any facility in which the **nbn**TM BSS ILA Sandpit is hosted or available, including for the purposes of establishing connectivity between the Customer Network and the **nbn**TM BSS ILA Sandpit, or access to the **nbn**TM Melbourne Test Facility, where Customer acquires the **nbn**-hosted variant of the **nbn**TM BSS ILA Sandpit.
- (d) In respect of each facility from which Customer elects to acquire the **nbn**TM BSS ILA Sandpit:
- (i) if the facility is owned or operated by a third party, Customer must arrange building entry rights and physical access to that facility directly with the facility owner (as notified by **nbn** from time to time);
 - (ii) if the facility is a Type 1 Facility, Customer must acquire relevant Service Elements of the Facilities Access Service from **nbn** to enter and access the facility, and Charges may apply as set out in the [Facilities Access Service Price List](#); and
 - (iii) if the facility is the National Test Facility, Customer must choose a connectivity method, connect to the National Test Facility and obtain physical access to the National Test Facility (as applicable) in accordance with the standard processes determined by **nbn** from time to time.
- (e) In respect of the **nbn**TM BSS ILA Sandpit, **nbn** will not supply or make available the following Product Features of, or options in respect of, the **nbn**TM BSS Products:
- (i) Customised Reporting;
 - (ii) Solar Power Option;
 - (iii) DC Power;
 - (iv) Operational Assurance Service;
 - (v) IP Addressing for **nbn**TM ABSL3 or **nbn**TM Mobility Private Network Layer 3; and
 - (vi) B-NNI Redundancy.

Part B: Service Terms

Section 5 is a Service Term which should be read in conjunction with section 3.2(a).

5. Operational Management

5.1 Items provided to Customer

(a) Customer is responsible for, and assumes risk in the following items to the extent that **nbn** provides such items to Customer in connection with **nbn**'s supply of the **nbn**TM BSS ILA Sandpit:

- (i) VSAT NTD IDU Gemini; and
- (ii) VSAT NTD IDU Capricorn,

from the time Customer receives those items until the time those items are returned to **nbn**.

(b) Customer must return or make available for collection, at **nbn**'s election, the items referred to in section 5.1(a) to **nbn** in good working condition at the earlier of the following events:

- (i) expiry or termination of this Agreement; and
- (ii) on request from **nbn**.

5.2 General conditions of use

Customer:

- (a) must comply with any technical and test specifications notified by **nbn** to Customer from time to time in relation to **nbn**TM BSS Product Testing and Development Activities;
- (b) must, on request by **nbn**, use reasonable endeavours to make available to **nbn**, Customer Personnel who are subject matter experts to support any root cause analysis and incident resolution that may be performed by **nbn** in connection with Customer's access to or use of the **nbn**TM BSS ILA Sandpit;
- (c) must keep secure and protect from unauthorised use any usernames, passwords and digital certificates provided by **nbn** to Customer or otherwise used by Customer in connection with the **nbn**TM BSS ILA Sandpit; and
- (d) is responsible for use of the **nbn**TM BSS ILA Sandpit by any person accessing the **nbn**TM BSS ILA Sandpit with the permission or credentials of Customer.

5.3 **nbn**TM BSS ILA Sandpit conditions of use

- (a) If requested by Customer, **nbn** will make a total of two VSAT NTD IDU Gemini and two VSAT NTD IDU Capricorn available to Customer at no charge for the purposes of conducting all **nbn**TM BSS Product Testing and Development Activities.
- (b) Customer must comply with any reasonable conditions of use of the **nbn**TM BSS ILA Sandpit (including any VSAT NTD IDU Gemini and VSAT NTD IDU Capricorn) notified by **nbn** to Customer from time to time.

5.4 Unauthorised Use

Customer must not:

- (a) access or use the **nbn**[™] BSS ILA Sandpit to perform testing activities other than those:
 - (i) set out in these **nbn**[™] BSS ILA Sandpit Service Terms which Customer has specified in its Sandpit Order and Configuration Form; or
 - (ii) otherwise approved in writing by **nbn** from time to time;
- (b) use the **nbn**[™] BSS ILA Sandpit for any non-functional testing, such as performance/volume testing or reliability/disaster recovery testing;
- (c) use any equipment supplied by **nbn** to Customer under this **nbn**[™] BSS ILA Sandpit Service Terms for any purpose other than the performance of **nbn**[™] BSS Product Testing and Development Activities;
- (d) use the **nbn**[™] BSS ILA Sandpit to supply any products or services to any Downstream Service Provider, Contracted End User, or other person, except:
 - (i) in connection with the performance of activities authorised by these **nbn**[™] BSS ILA Sandpit Service Terms; or
 - (ii) with the prior written consent of **nbn**; or
- (e) re-sell or re-supply to any third party:
 - (i) the **nbn**[™] BSS ILA Sandpit or Customer's rights to access or use the **nbn**[™] BSS ILA Sandpit; or
 - (ii) any other services or capabilities that are provided by **nbn** to Customer in connection with the **nbn**[™] BSS ILA Sandpit,without prior written consent from **nbn**.

Part C: Price List

Section 6 sets out non-recurring Charges which apply in connection with the access to and use of the **nbn**TM BSS ILA Sandpit.

6. Non-recurring Charges

- (a) The Charges for activities in connection with the access to and use of the **nbn**TM BSS ILA Sandpit (after completion of any required On-boarding) are:

| Activity | Non-recurring Charge |
|---|----------------------|
| Access to and use of the nbn TM BSS ILA Sandpit | \$250.00 per hour |